

BEEKs™ Patient Wristband

The HID BEEKs Patient Wristband is a Bluetooth Low-Energy (BLE) beacon that is worn around the wrist, like a watch to identify patients and supports real-time location applications.

Besides the easy location of patients in the hospital, healthcare facilities may use the signal provided by the BEEKs Patient Wristband to optimize workflows, waiting times or automatically create audit trails of treatments or hand sanitation.

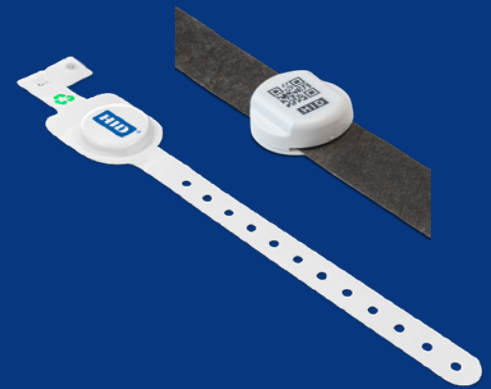
BEEKs Patient Wristbands may be used along with BEEKs (Duress-) badges or Keyfobs worn by healthcare personnel or visitors for a more complete RTLS solution.

When combined with HID Global's end-to-end IoT Services ecosystem, that includes BluFi™ BLE to WiFi gateways and Bluzone™ cloud services, BEEKs can be centrally managed through the cloud to transfer new messages, firmware updates and battery status checks remotely. Their unique design allows BEEKs to broadcast reliably even in densely populated WiFi environments.

The extensible architecture allows organizations to scale deployments of standard beacon applications and extend to centralized management, real-time condition monitoring or location services in a later phase.

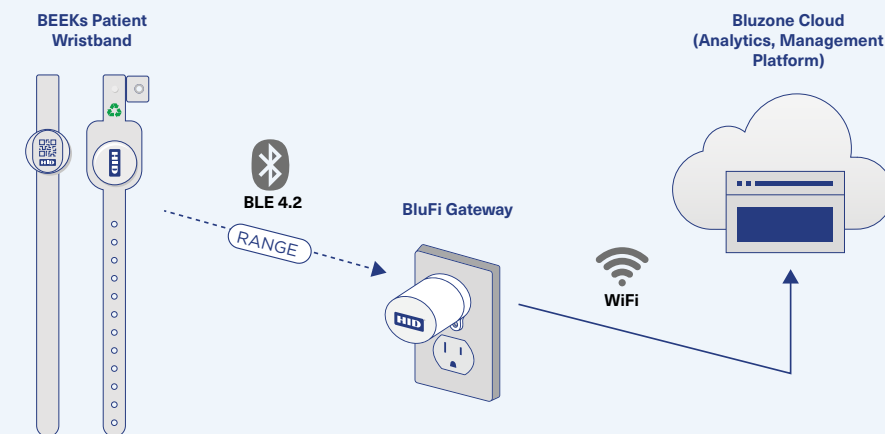
BEEKs Patient Wristbands have a typical lifetime of 14-30 days (depending on the version of PAW) and are intended for single patient use.

Data in HID Bluzone™ is anonymized for privacy. A secure web-service API enables the hospital's application to consume the geo-coded location data and merge it with the hospital's business logic and user interfaces.

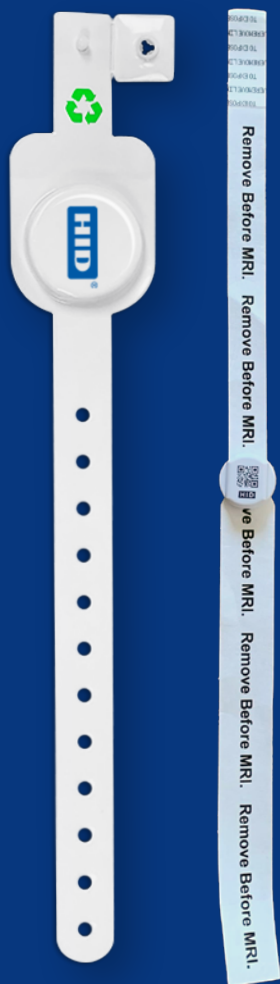


CONFIGURABLE BLE WRISTBAND FOR HEALTHCARE LOCATION SERVICES


- Supports Real-Time-Location- Systems (RTLS) for Hospitals
- Flexible adaptation options
- Compatible with HID Bluzone remote management



BEEKs Patient Wristband



BEEKs Patient Wristband

		
Base Model Number	EMBC22	EMBT20
Configuration Types	Standard	Standard
Part Number	BVPAWS-EM20	BVPAWS-V4
	RF SPECIFICATIONS	
Bluetooth standard/Protocol	Bluetooth Low Energy (BLE) 4.2	
Frequency Band	2400-2483.5 MHz	
Max Output power	<10 dBm (e.i.r.p)	
Number of channels	40	
Modulation	GFSK	
Antenna/gain	0dBm Single Antenna, Isotropic	
Mode of operation	Half duplex	
	FEATURES	
BLE Application Supported	sBeacon	
Special properties		Requires a separate Tyvek® Wristband P/N: BVPAWS-BAND
Add-on Products	Auto-discharge box for BVPAWS, includes POE gateway (front access) P/N: BVPAWS-BOX	
	PHYSICAL	
Length x Width	1.5 in x 11.8 in x 0.4 in (39 x 300 x 10 mm)	0.7 in x 0.7 in x 0.3 in (19 x 19 x 7 mm)
Mounting Method	Clip	
Housing Material	PVC	ABS
Color	White	
Weight	0.3 oz (9 g)	
	BATTERY	
Type	CR-2032, 3V	SR626- 1.5V Alkaline Manganese Button Cell (Mercury Free)
Life	RTLS mode (Asset Tracking), advertisement every 500ms: 30 days Setting: sBeacon advertising Tx power: -4 dBm	"RTLS mode ("Asset" Tracking), advertisement every 2 seconds: 14 days Setting: sBeacon advertising Tx power: 2.5 dBm"
	CHEMICAL AND MECHANICAL RESISTANCE	
Water	IP67, 68° F (20° C), 3.3 ft (1 m) x 1 h	
Cleaning	Use Isopropyl/Alcohol-based cleaning wipes	
	THERMAL	
Storage	-4° to +140° F (-20° to +60° C)	32° to +113° F (0° to +45° C)
Operating Temperature	-4° to +140° F (-20° to +60° C)	32° to +113° F (0° to +45° C)
	OTHER	
Standards	FCC, CE	FCC / IC
MRI Compatible	No (must be removed from patient before MRI)	
Box Size	500 pcs.	2,000 pcs.
Warranty	12 months	6 months

HID

© 2023 HID Global Corporation/ASSA ABLOY AB. All rights reserved.

2023-11-23-ibt-beeks-patient-wristband-ds-en PLT-05934
Part of ASSA ABLOY

Phone: 1 905 513 8919
Email: sales@rfidcanada.com
Web: www.rfidcanada.com



RFIDCanada
Automating Identification

